

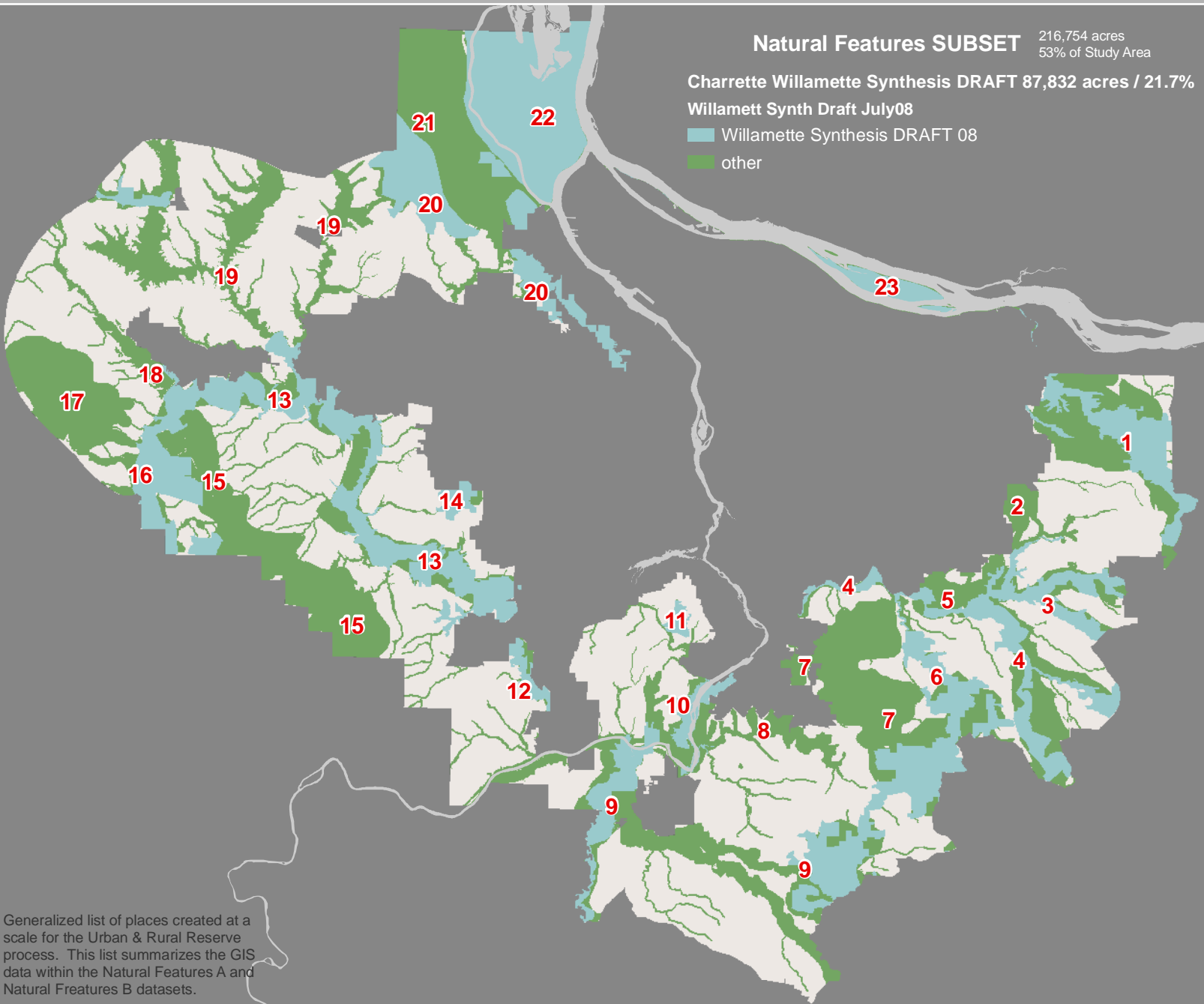
Natural Features SUBSET

216,754 acres
53% of Study Area

Charrette Willamette Synthesis DRAFT 87,832 acres / 21.7%

Willamett Synth Draft July08

- Willamette Synthesis DRAFT 08
- other



For Urban & Rural Reserves

Subset of the Natural Landscape Features Inventory for the Urban & Rural Reserve Process

October 2008

Urban & Rural Reserve Study Area

approximately 404,480 acres

Natural Features SUBSET

- Comprised of:
- Wetlands - NWI plus local contributions (Metro's 2008)
 - 10,389 acres / 2.6% of Study Area
 - Perennial Streams - 200ft Buffers (ESRI's 2006)
 - 34,137 acres / 8.4% of Study Area
 - Floodplains - FEMA's q3 of local input (Metro 2008)
 - 75,561 acres of Study Area
 - Willamette Synthesis -DRAFT (TNC - July,2008)
 - 87,832 acres / 21.7% of Study Area
 - Conservation Opportunity Areas (ODFW 2005)
 - 72,656 acres / 18% Study Area
 - Portfolio sites (TNC 2006)
 - 133,800 acres / 33% of Study Area
 - Conservation & Restoration Opportunity Areas (PNW-ERC - 2002)
 - 90,802 acres / 22.4% of Study Area
 - Professional Input from Charrette (February 2007)
 - 18,455 acres / 4.6% of Study Area

We have created a subset of the 2007 Graphic Map as GIS data to enable overlays with ODF's Forest and ODA Agriculture data. This is to be used to guide the Urban and Rural Reserve process not to be used on a site by site analysis.

Individual sites will need separate assesment beyond a this landscape overview.

Generalized list of places created at a scale for the Urban & Rural Reserve process. This list summarizes the GIS data within the Natural Features A and Natural Features B datasets.

- | | | | | |
|--------------------------------------|-----------------------------|---|-------------------------|-----------------------------|
| # 1) Sandy River | 9) Pudding & Mollala Rivers | 10) Willamette Narrows to Canemah Bluff | 14) Cooper Mountain | 19) Dairy & McKay Creeks |
| 2) East Buttes | 6) Clear Creek Canyon | 11) Wilson Creek | 15) Chehalem Mountain | 20) Rock Creek Headwaters |
| 3) Deep Creek Canyon | 7) Newell & Abernathy Creek | 12) Tonquin Geologic Area | 16) Wapato Lake | 21) Forest Park Connections |
| 4) Clackamas River | 8) Beaver Creek | 13) Tualatin River | 17) Hagg Lake Watershed | 22) Sauvie Island |
| 5) Clackamas River Bluffs & Greenway | 9) Pudding & Mollala Rivers | | 18) Lower Gales Creek | 23) Columbia River Island |